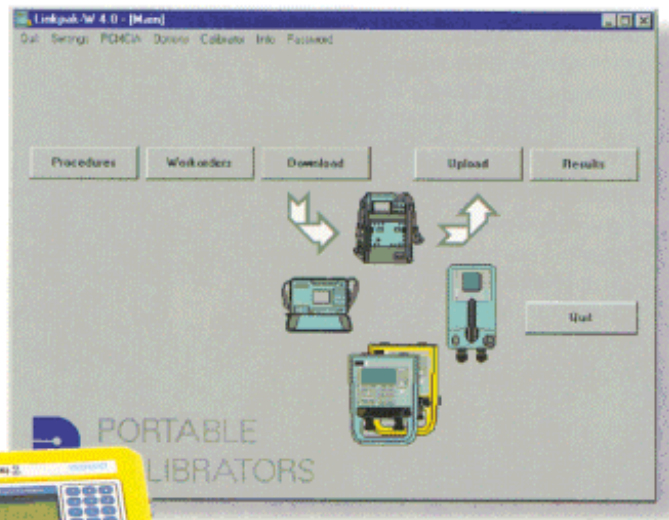


Linkpak - W

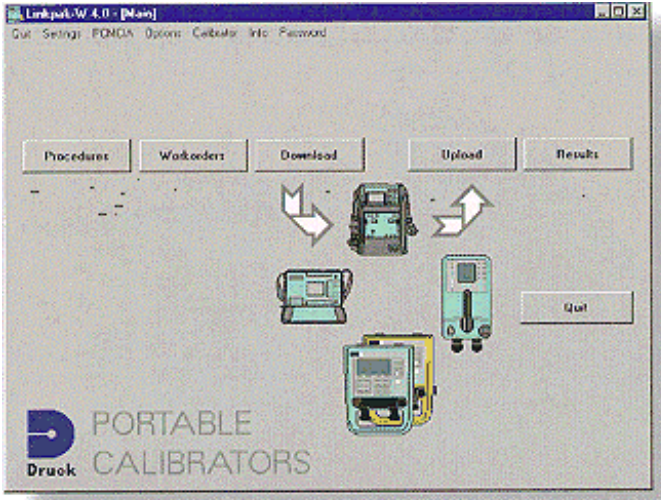
Calibration Software for Portable Calibrators

- Windows based software
- Compatible with Druck Portable Calibrators
- As Found and As Left calibrations
- Identifies calibration errors in the field
- Password protection
- No docking required (memory card)
- ISO 9000 compliant
- DBF file format and data export capability
- Supports PCMCIA and RS 232



Linkpak - W

Calibration Software for Portable Calibrators



Linkpak-W Windows based software is designed to support Druck's extensive range of portable documenting calibrators. It includes an instrumentation database which makes it quick and easy to generate calibration procedures, create work orders, transfer data to and from the calibrators and to print calibration certificates. The calibration certificate contains all the relevant information required to comply with quality approvals such as ISO 9000 and FDA. Linkpak-W is easy to use without actual calibrator knowledge and links plant maintenance work to quality control and engineering. This multi-lingual software can be operated in six languages (English, French, German, Italian, Portuguese and Spanish) and can be used, for example, in process plant calibration and maintenance workshops by instrument technicians, contractors, manufacturers and service companies. It offers high productivity of calibration scheduling, calibration tasks and documentation.

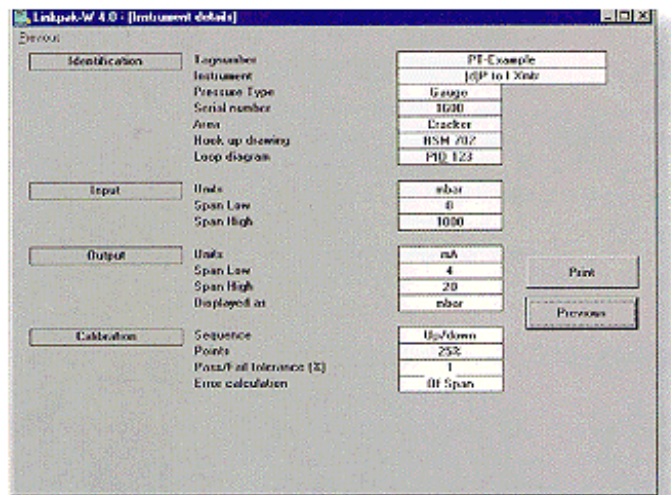
PROCEDURES

Pre-prepared calibration routines for temperature, pressure and electrical based instruments are quickly generated with individual instrument details, specific range settings and calibration strategy, to form unique test procedures.

These are stored in the database for future use and can be viewed at any time.

Replacement instrument serial number

The instrument serial number is recorded with the procedure. At each calibration this serial number is compared with the actual serial number found and replacement instruments are highlighted.

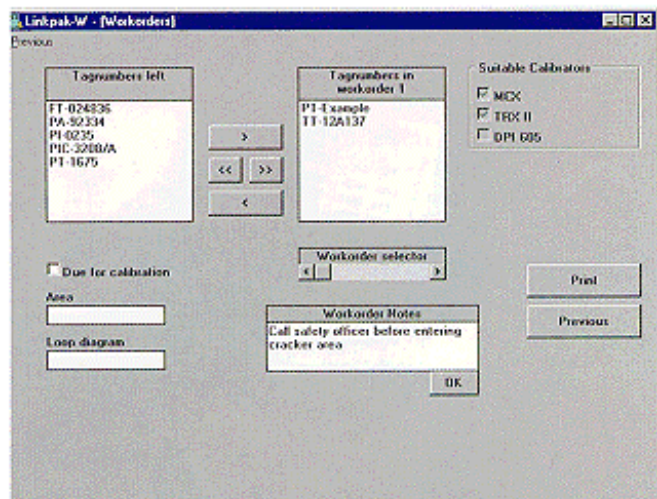


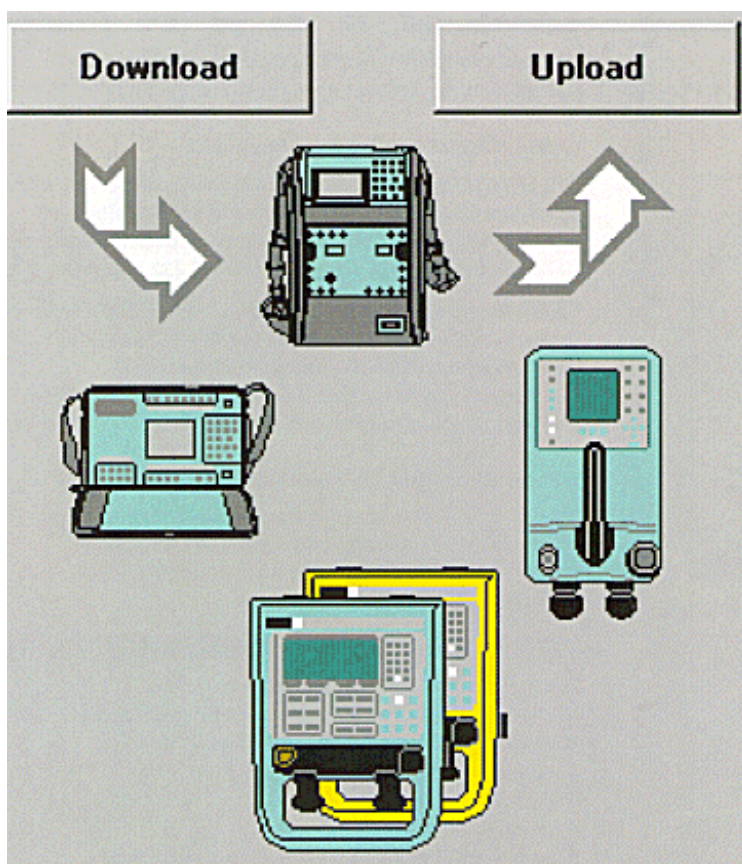
WORKORDERS

A workorder allows a selection of procedures to be grouped together, detailing the calibrations to be performed in the field. Workorders are created by the PC operator according to work schedules and could contain, for example, all the calibration procedures for an area or loop, or those to be completed by a technician in one day.

Time based schedules

Using the time based search facility, devices which are due for calibration can be extracted from the database. If calibrations are performed by area or loop, Linkpak-W provides filters for viewing just these specific instruments.

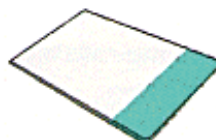




Calibrator interface

Linkpak-W offers two methods of data transfer between the portable calibrators.

PCMCIA card



Data exchange via PCMCIA cards eliminates time consuming docking with the PC. The MCX and TRX-II calibrators need never leave the field as workorders and results files can be transferred to

and from the PCMCIA card independently of the calibrator. Results files stored on the PCMCIA card are windows compatible and DBF formatted ready for use by Linkpak-W or other software applications.

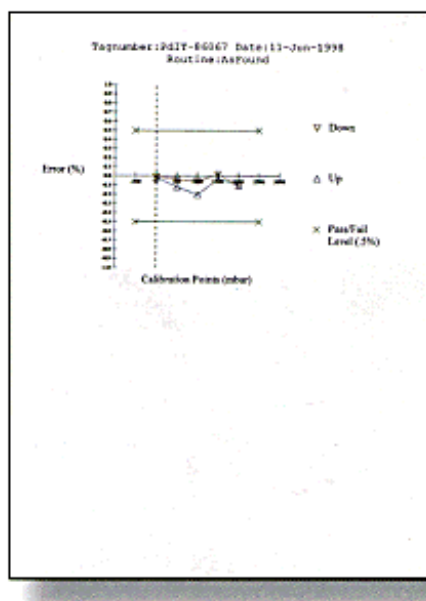
RS 232 serial interface



Linkpak-W also supports data exchange via a standard RS 232 serial interface. This is applicable to the DPI 605 and DPI 610, but also to the MCX and TRX-II where the user PC does not support PCMCIA card technology.

RESULTS

Calibration certificates are printed in a clear and logical format which complies with the requirements of quality approvals such as ISO 9000. As left or As Found certificates give detailed information about the device calibrated, the calibrator used, the technician and the calibration strategy, as well as detailing the actual results, errors and Pass/Fail status. Graphical analysis is provided with a zoom facility, allowing optimal resolution or scaling consistent with previous results.

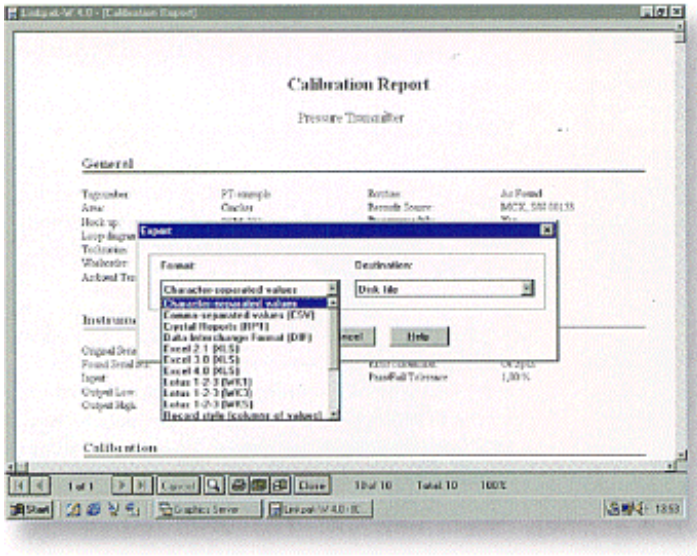


Calibration Report			
General			
Tagnumber	9417-86067	Account	As Found
Axis	Pressure Test	Balance Scale	0.01 mm, 0.1 mm/1mm
Scale	0.00125 kg	Accuracy	0.05
Tag description	9417-86067	Process/Operator	9417-86067
Technician	9417-86067	Recording Date	11-Jun-98
Module	1	Recording Time	15:31:40
Address Type	11.1	Recording Mode	Local
		Printed	15-Jun-98
Instrument			
Original Serial No.	07021701	Adjusted	--
Found Serial No.	07021701	Scale correction	0.0000
Span	0.1000 calms (0)	Repeatability	0.00%
Offset Low	0.00		
Offset High	0.10		
Calibration			
Cal. Point	Weight	Error (%)	Status
0.000 calms	1.0000 g	0.000	Pass
0.001 calms	1.0000 g	0.100	Pass
0.002 calms	10.0000 g	0.000	Pass
0.003 calms	10.0000 g	0.000	Pass
0.004 calms	10.0000 g	0.000	Pass
0.005 calms	10.0000 g	0.000	Pass
0.006 calms	10.0000 g	0.000	Pass
0.007 calms	10.0000 g	0.000	Pass
0.008 calms	10.0000 g	0.000	Pass
0.009 calms	10.0000 g	0.000	Pass
0.010 calms	10.0000 g	0.000	Pass
Comments			
Instruments not tested and found to be within specifications. No adjustments made. High and low software values corrected using manual adjustment.			
Date		Approved	

Linkpak - W



Calibration Software for Portable Calibrators



Export function

An export function re-formats data for use with other software applications or plant maintenance systems.

Using the DPI 610 with Linkpak-W

The DPI 610 Portable Pressure Calibrator incorporates many advanced features not normally found in calibrators of a similar price. Linkpak-W achieves the full potential from the DPI 610's data storage capability and RS 232 interface.

Calibration procedures are printed as "Workorders", for use in the field. Results are stored in the DPI 610 and later transferred to Linkpak-W, via the RS232 interface. Calibration reports can then be printed detailing the input and output values recorded in the field.

Intecal-w calibration management software

Intecal-W Windows based software builds on the concepts of Linkpak-W, supporting both laboratory and field calibrators with extensive management and analysis features.

LINKPAK-W COMPATIBLE CALIBRATORS



DPI 605 High Precision Portable Pressure Calibrator.

- -1 to 20 bar pneumatic pressure source.
- Ranges -1 to 700 bar.
- 0.025% Rdg accuracy.
- RS 232 Interface.
- Intrinsically safe version available.



MCX High Precision Multifunction Calibrator.

- T/C's, RTD's, mA, mV/V, ohms, frequency.
- Pressure - 1 to 350 bar.
- Switch testing.
- PCMCIA card and RS 232.
- Smart HART® communicator.



DPI 610 Portable Pressure Calibrator.

- -1 to 20 bar pneumatic source or 0 to 400 bar hydraulic source.
- Ranges -1 to 700 bar.
- 0.025% FS accuracy.
- RS 232 interface.



TRX-II Portable Multifunction Calibrator.

- T/C's, RTD's, mA, mV/V, ohms, frequency.
- Pressure -1 to 700 bar.
- Switch testing.
- PCMCIA card and RS 232.

SYSTEM REQUIREMENTS

To run Linkpak-W you will require the following:-

- An IBM compatible PC with a 486 processor or higher.
 - Microsoft Windows 3.1(1), 95 NT 3.51 or NT 4.0.
 - A hard disk with at least 5MB of free space.
 - A 3½ " floppy disk drive.
 - A mouse or similar pointing device.
- If using an MCX or TRX-II a PCMCIA card slot is also recommended.

ORDERING INFORMATION

Please state the following:-

- 1) **LINKW** for the MCX, TRX-II, DPI 605 and DPI 610. Includes a PCMCIA card with release key for one MCX or TRX-II, RS 232 cables/port adaptor (DPI 605 RS 232 cable supplied with the instrument) and handbook.

Note: To use with multiple MCX/TRX-II contact Druck.

- 2) **LPDPI** for the DPI 605 and DPI 610 only. Includes the full software and items listed for LINKW, but not the PCMCIA card or RS 232 cables for the MCX or TRX-II.

Note: To upgrade to LINKW contact Druck.

Continuing development sometimes necessitates specification changes without notice.



Druck Limited
Fir Tree Lane, Groby
Leicester LE6 0FH England
Tel: + 44 (0) 116 231 7100
Fax: + 44(0) 116 231 7103
E-mail: sales@druck.com
Internet: www.druck.com

Agent